

## APPENDIX D

### Stakeholder Consultation List and Responses

## Appendix D - Stakeholder Consultation List and Responses

Consultee	Response
<b>Faith Groups</b>	
Advisory Board of Churches	
All Saints Vicarage	
Buddhist Centre Croydon	
Christ Church Purley	
Church Commissioners for England	
Croydon & District Synagogue	
Croydon District Council of the United Reform Church	
Croydon Mosque & Islamic Centre	Received 03-11-09
Diocese of Southwark, Board of Finance	
Diocese of Southwark, Croydon Area Mission Team	Received 05-11-09
Methodist Church Croydon Circuit	
Nanak Community Centre	Received 05-11-09
New Addington Baptist Church	
Norbury Methodist Church	
Pawsons Road Baptist Church	Received 02-11-09
Roman Catholic Archdiocese of Southwark	Received 24-10-09
Shree Sakthy Ghanapathy Temple	
Sivaskanthagiri Murugan Kovil	
Upper Norwood Saint John the Evangelist Church	
West Croydon Baptist Church	
Woodmansterne Baptist Church	
Unknown Faith Group Respondant	Received 11-11-09
<b>Additional Faith Groups</b>	
St Elpwege Catholic Church	Received 29-10-09
Roman Catholic Deanery of Croydon	Received 09-11-09
<b>Neighbouring Authorities</b>	
Bandon Hill Cemetery	Received 30-10-09
London Borough of Bromley	Received 03-11-09
London Borough of Lambeth	
London Borough of Merton	Received 26-10-09
London Borough of Sutton	Received 30-10-09
Reigate and Banstead Borough Council	
Tandridge District Council	
<b>Funeral Directors and Associated Organisations</b>	
A&D Pink	
A&J Moriss & Sons (Broadway)	
A&J Moriss & Sons (Lower Adiscombe)	
Cliff Hollett	
Co-operative Funeral Services (Croydon)	Received 05-11-09
Co-operative Funeral Services (New Addington)	
Co-operative Funeral Services (Thornton Heath)	
D.A. Lindsay & Sons	
Ebbutt (Croydon)	
Ebbutt (South Croydon)	
Elysian Funeral Supplies	
Francis Chappel & Sons	
Golden Leaves Ltd	
J.B. Shakespear	Received 02-11-09
Rowland Brothers (Croydon)	Received 21-09-09
Rowland Brothers (New Addington)	
Rowland Brothers (Purley)	
SAIF Insure	
Selsdon & District	
Shakespeare	
Surrey	
W Kemp & Son	
<b>Other Groups</b>	
Age Concern	
Cruse Bereavement Care	
Help the Aged	
Mayday Maternity Unit	Received 05-11-09
Sands	Received 02-11-09

## APPENDIX E

Burial Demand Tables

## Appendix E: Burial Demand

**Table i: Population Growth**

Population / Year	2001	2002	2003	2004	2005	2006	2007	2008	2009	2010	2011	2012	2013	2014	2015	2016
LB Croydon	335,479	334,346	333,303	332,634	332,012	331,373	332,315	336,409	337,927	339,464	341,601	350,394	359,787	363,655	365,592	370,830
North Croydon	120,987	120,582	120,059	119,498	119,453	119,162	119,308	120,837	121,030	121,183	121,417	123,259	123,701	124,150	124,050	124,156
Central Croydon	88,410	88,311	88,410	88,628	88,594	88,689	89,190	91,354	92,509	93,749	95,498	100,480	109,045	112,502	113,685	117,699
East Croydon	87,178	86,588	86,125	85,828	85,421	85,021	85,165	85,075	85,003	84,950	84,891	86,051	86,141	86,109	85,952	85,960
South Croydon	38,904	38,866	38,709	38,681	38,543	38,500	38,652	39,143	39,385	39,582	39,795	40,604	40,900	40,894	41,906	43,015

Population / Year	2017	2018	2019	2020	2021	2022	2023	2024	2025	2026	2027	2028	2029	2030	2031
LB Croydon	373,464	376,713	380,924	384,103	383,785	383,905	383,942	383,974	384,001	384,022	385,024	386,026	387,028	388,030	389,032
North Croydon	124,181	124,235	124,294	124,303	124,174	124,285	124,369	124,486	124,655	124,875	125,422	125,963	126,483	126,969	127,416
Central Croydon	119,303	122,456	126,593	129,804	129,816	128,637	127,394	126,039	124,527	122,871	121,445	119,911	118,285	116,579	114,807
East Croydon	85,912	85,905	85,881	85,827	85,682	86,546	87,454	88,453	89,568	90,799	92,374	94,084	95,933	97,916	100,022
South Croydon	44,067	44,118	44,156	44,170	44,113	44,436	44,724	44,996	45,250	45,477	45,784	46,067	46,326	46,566	46,786

Source: GLA 2008 Round Demographic Projections, March 2008 - Low Projection (2009-02)

**Table ii: Estimated Deaths**

Number of Deaths / Year	2001	2002	2003	2004	2005	2006	2007	2008	2009	2010	2011	2012	2013	2014	2015	2016
LB Croydon	-	2,755	2,745	2,718	2,597	2,590	2,427	2,350	2,537	2,533	2,521	2,461	2,389	2,349	2,329	2,280
North Croydon	-	994	989	976	934	931	871	844	909	904	896	866	821	802	790	764
Central Croydon	-	728	728	724	693	693	651	638	694	700	705	706	724	727	724	724
East Croydon	-	713	709	701	668	665	622	594	638	634	627	604	572	556	548	529
South Croydon	-	320	319	316	301	301	282	273	296	295	294	285	272	264	267	265

Year	2017	2018	2019	2020	2021	2022	2023	2024	2025	2026	2027	2028	2029	2030	2031
LB Croydon	2,253	2,221	2,181	2,152	2,157	2,161	2,170	2,181	2,191	2,204	2,210	2,215	2,218	2,223	2,229
North Croydon	749	733	712	697	698	700	703	707	711	717	720	723	725	727	730
Central Croydon	720	722	725	727	730	724	720	716	710	705	697	688	678	668	658
East Croydon	518	507	492	481	482	487	494	502	511	521	530	540	550	561	573
South Croydon	266	260	253	247	248	250	253	256	258	261	263	264	266	267	268

Source: GLA 2008 Round Demographic Projections, March 2008 - Low Projection (2009-02)

**Table iii: Deaths handled by Croydon Council**

Year	2001	2002	2003	2004	2005	2006	2007	2008
Total deaths within Croydon (GLA)	-	2,755	2,745	2,718	2,597	2,590	2,427	2,350
Total deaths handled by Croydon Council (At LBC operated facilities)	2,311	2,330	2,466	2,263	2,168	2,037	2,045	2,165
Total deaths handled by Croydon Council minus 10% inflow (i.e. non-Croydon residents)	2,080	2,097	2,219	2,037	1,951	1,833	1,841	1,949
Percentage of Total Deaths of Croydon residents in LBC facilities	N/A	76%	81%	75%	75%	71%	76%	83%
<b>Average</b>	<b>77%</b>							

Source: Table ii and LB Croydon Bereavement Services and GLA 2008 Round Demographic Projections (2009-02)

**Table iv: Projections of Deaths handled by Croydon Council**

Croydon Residents Deaths handled by Croydon Council/Year	2001	2002	2003	2004	2005	2006	2007	2008	2009	2010	2011	2012	2013	2014	2015	2016
LB Croydon	2,080	2,097	2,219	2,037	1,951	1,833	1,841	1,949	1,953	1,951	1,941	1,895	1,839	1,809	1,794	1,756
North Croydon	750	756	799	732	702	659	661	700	700	696	690	667	632	617	609	588
Central Croydon	548	554	589	543	521	491	494	529	535	539	543	543	557	560	558	557
East Croydon	540	543	573	526	502	470	472	493	491	488	482	465	440	428	422	407
South Croydon	241	244	258	237	227	213	214	227	228	227	226	220	209	203	206	204

Croydon Residents Deaths handled by Croydon Council/Year	2017	2018	2019	2020	2021	2022	2023	2024	2025	2026	2027	2028	2029	2030	2031
LB Croydon	1,734	1,710	1,679	1,657	1,661	1,664	1,671	1,679	1,687	1,697	1,702	1,705	1,708	1,712	1,716
North Croydon	577	564	548	536	537	539	541	544	548	552	554	556	558	560	562
Central Croydon	554	556	558	560	562	558	554	551	547	543	537	530	522	514	506
East Croydon	399	390	379	370	371	375	381	387	393	401	408	416	423	432	441
South Croydon	205	200	195	191	191	193	195	197	199	201	202	204	204	205	206

Source: Table ii and iii

**Table v: Cremation and Burials Level of LB Croydon**

Year	2002	2003	2004	2005	2006	2007	2008
Cremations	2030	2164	1963	1876	1767	1794	1852
Cremations Croydon Residents (minus 10% inflow)	1827	1948	1767	1688	1590	1615	1667
Full Body Burials (FBB) Croydon Residents	300	302	300	292	270	251	313
Full Body Burials (FBB) (minus 10% inflow)	270	272	270	263	243	226	282
Average Number of Cremations	1729						
Average Number of FBB	261						
<b>Average Percentage Cremations</b>	<b>87%</b>						
<b>Average Percentage FBB</b>	<b>13%</b>						

Source: LB Croydon Bereavement Services

**Table vi: Need for Public FBB Burials within Croydon**

No. FBB / Year	2001	2002	2003	2004	2005	2006	2007	2008	2009	2010	2011	2012	2013	2014	2015	2016
LB Croydon	273	270	272	270	263	243	226	282	254	254	252	246	239	235	233	228
North Croydon	98	97	98	97	95	87	81	101	91	91	90	87	82	80	79	76
Central Croydon	72	71	72	72	70	65	61	76	70	70	71	71	72	73	73	72
East Croydon	71	70	70	70	68	62	58	71	64	63	63	60	57	56	55	53
South Croydon	32	31	32	31	31	28	26	33	30	30	29	29	27	26	27	26

No. FBB / Year	2017	2018	2019	2020	2021	2022	2023	2024	2025	2026	2027	2028	2029	2030	2031
LB Croydon	225	222	218	215	216	216	217	218	219	221	221	222	222	223	223
North Croydon	75	73	71	70	70	70	70	71	71	72	72	72	73	73	73
Central Croydon	72	72	73	73	73	72	72	72	71	71	70	69	68	67	66
East Croydon	52	51	49	48	48	49	49	50	51	52	53	54	55	56	57
South Croydon	27	26	25	25	25	25	25	26	26	26	26	26	27	27	27

Source: Table iv and v

**Table vii: Total need for Public FBB Burials within LB Croydon**

Period	LB Croydon		North Croydon		Central Croydon		East Croydon		South Croydon	
	Resident FBB Requirements	Total FBB Requirement including inflow	Resident FBB Requirements	Total FBB Requirement including inflow	Resident FBB Requirements	Total FBB Requirement including inflow	Resident FBB Requirements	Total FBB Requirement including inflow	Resident FBB Requirements	Total FBB Requirement including inflow
2009-2011	760	844	271	301	210	233	190	211	89	98
2012-2016	1,182	1313	405	405	361	401	281	312	135	150
2017-2021	1,098	1219	359	359	363	403	248	276	128	142
2022-2026	1,092	1213	358	358	358	398	252	280	128	142
2027-2031	1,111	1234	363	363	339	377	276	306	133	148
<b>Total</b>	<b>5,242</b>	<b>5,824</b>	<b>1,756</b>	<b>1,951</b>	<b>1,631</b>	<b>1,812</b>	<b>1,247</b>	<b>1,385</b>	<b>612</b>	<b>680</b>

Source: Table vi

**Table viii: Average Level of Cremated Remains which are Buried**

<b>Year</b>	<b>2004</b>	<b>2005</b>	<b>2006</b>	<b>2007</b>	<b>2008</b>
Cremations	1963	1876	1767	1794	1852
Cremations Croydon Residents (minus 10% inflow)	1767	1688	1590	1615	1667
Burial of Cremated Remains	205	197	179	181	171
Burial of Cremated Remains (minus 10% inflow)	185	177	161	163	154
Average Number of Cremations			1665		
Average Number of Cremations Burials			168		
<b>Average Percentage Cremated Remains Buried</b>			<b>9%</b>		

Source: LB Croydon Bereavement Services

**Table ix: Need for Public Cremated Remains Plots within LB Croydon**

<b>Burial Cremated Remains / Year</b>	<b>2004</b>	<b>2005</b>	<b>2006</b>	<b>2007</b>	<b>2008</b>	<b>2009</b>	<b>2010</b>	<b>2011</b>	<b>2012</b>	<b>2013</b>	<b>2014</b>	<b>2015</b>	<b>2016</b>
Total No. Cremations	1,767	1,688	1,590	1,615	1,667	1,699	1,697	1,689	1,649	1,600	1,574	1,560	1,528
<b>Burial Cremated Remains Need</b>													
LB Croydon	185	177	161	163	154	156	155	155	151	147	144	143	140
North Croydon	66	64	58	58	55	56	55	55	53	50	49	49	47
Central Croydon	49	47	43	44	42	43	43	43	43	44	45	44	44
East Croydon	48	46	41	42	39	39	39	38	37	35	34	34	32
South Croydon	21	21	19	19	18	18	18	18	17	17	16	16	16

<b>Burial Cremated Remains / Year</b>	<b>2017</b>	<b>2018</b>	<b>2019</b>	<b>2020</b>	<b>2021</b>	<b>2022</b>	<b>2023</b>	<b>2024</b>	<b>2025</b>	<b>2026</b>	<b>2027</b>	<b>2028</b>	<b>2029</b>	<b>2030</b>	<b>2031</b>
Total No. Cremations	1,509	1,488	1,461	1,442	1,445	1,448	1,453	1,461	1,468	1,477	1,481	1,484	1,486	1,489	1,493
<b>Burial Cremated Remains Need</b>															
LB Croydon	138	136	134	132	132	133	133	134	134	135	136	136	136	136	137
North Croydon	46	45	44	43	43	43	43	43	44	44	44	44	44	45	45
Central Croydon	44	44	44	45	45	44	44	44	44	43	43	42	42	41	40
East Croydon	32	31	30	30	30	30	30	31	31	32	33	33	34	34	35
South Croydon	16	16	16	15	15	15	16	16	16	16	16	16	16	16	16

Source: Table iv, v and viii

**Table x: Total need for Public Cremated Remains Burials within LB Croydon**

Period	LB Croydon		North Croydon		Central Croydon		East Croydon		South Croydon	
	Cremated Remains Burial Requirements	Total Cremated Remains Burial Requirement including inflow	Cremated Remains Burial Requirements	Total Cremated Remains Burial Requirement including inflow	Cremated Remains Burial Requirements	Total Cremated Remains Burial Requirement including inflow	Cremated Remains Burial Requirements	Total Cremated Remains Burial Requirement including inflow	Cremated Remains Burial Requirements	Total Cremated Remains Burial Requirement including inflow
2009-2011	466	518	166	185	129	143	117	129	54	60
2012-2016	725	805	248	276	221	246	172	192	83	92
2017-2021	673	748	220	245	222	247	152	169	78	87
2022-2026	669	744	220	244	219	244	154	172	78	87
2027-2031	681	756	222	247	208	231	169	188	81	91
<b>Total</b>	<b>3,213</b>	<b>3,571</b>	<b>1,076</b>	<b>1,196</b>	<b>1,000</b>	<b>1,111</b>	<b>764</b>	<b>849</b>	<b>375</b>	<b>417</b>

Source: Table ix



## APPENDIX F

Burial Demand Scenario Tables



## APPENDIX G

Muslim Burial Demand Tables

## Appendix G: Muslim Burial Demand

**Table i: LB Croydon Religion by Ethnicity**

		Religion									Total
		Buddhist	Christian	Hindu	Jewish	Muslim	Sikh	Other	No Religion	Religion not stated	
<b>Ethnicity</b>	White	0.2%	72.3%	0.0%	0.4%	1.2%	0.0%	0.3%	17.7%	8.0%	100.0%
	Black Caribbean	0.1%	76.0%	0.4%	0.2%	0.6%	0.0%	0.3%	10.4%	12.0%	100.0%
	Black African	0.0%	80.3%	0.2%	0.1%	10.3%	0.1%	0.2%	1.9%	6.8%	100.0%
	Black Other	0.2%	65.5%	0.2%	0.2%	2.4%	0.0%	0.4%	18.8%	12.3%	100.0%
	Indian	0.0%	13.9%	62.6%	0.1%	8.7%	5.5%	4.0%	1.4%	3.8%	100.0%
	Pakistani	0.1%	2.5%	0.3%	0.1%	92.4%	0.0%	0.1%	0.8%	3.8%	100.0%
	Bangladeshi	0.0%	1.4%	0.2%	0.0%	86.6%	0.0%	0.0%	0.6%	11.3%	100.0%
	Chinese	18.2%	29.0%	0.1%	0.0%	0.5%	0.0%	0.5%	41.2%	10.5%	100.0%
	Other Asian	2.8%	32.8%	29.4%	0.2%	19.1%	0.6%	0.6%	7.1%	7.2%	100.0%
	Other	8.6%	47.1%	2.2%	1.0%	14.1%	0.2%	1.1%	15.9%	9.8%	100.0%

Source: Office for National Statistics, Census 2001

**Table ii: LB Croydon Muslim Population**

Population / Year	2001	2002	2003	2004	2005	2006	2007	2008	2009	2010	2011	2012	2013	2014	2015	2016
LB Croydon Muslim Population	17,945	18,656	19,433	20,118	20,762	31,384	22,075	22,917	23,609	24,280	24,966	26,005	27,072	27,818	28,431	29,218
LB Croydon	335,479	334,346	333,303	332,634	332,012	331,373	332,315	336,409	337,927	339,464	341,601	350,394	359,787	363,655	365,592	370,830

Population / Year	2017	2018	2019	2020	2021	2022	2023	2024	2025	2026	2027	2028	2029	2030	2031
LB Croydon Muslim Population	29,838	30,481	31,171	31,786	32,177	32,568	32,932	33,277	33,607	33,923	34,285	34,636	34,976	35,308	35,632
LB Croydon	373,464	376,713	380,924	384,103	383,785	383,905	383,942	383,974	384,001	384,022	385,024	386,026	387,028	388,030	389,032

Source: Table i and GLA 2008 low mid-year ethnic population projections

**Table iii: Muslim Deaths Handled by LB Croydon Per Annum**

Year	2001	2002	2003	2004	2005	2006	2007	2008
Total Muslim burials	33	32	30	35	35	27	24	40
Average p.a	32							

Source: LB Croydon Bereavement Services

**Table iv: Projected Demand for Muslim Burials within LB Croydon**

Year	2008	2009	2010	2011	2012	2013	2014	2015	2016	2017	2018	2019	2020	2021	2022	2023
LB Croydon Muslim Burial Demand	32	33	34	35	36	38	39	40	41	42	43	44	44	45	45	46

Year	2024	2025	2026	2027	2028	2029	2030	2031
LB Croydon Muslim Burial Demand	46	46	47	47	48	48	49	50

Source: Table i and GLA 2008 low mid-year ethnic population projections

## APPENDIX H

Estimated Baseline Need

**Appendix E – Estimated Baseline Need**

**Table i: Residual Baseline Need Breakdown**

			FBB			Cremated Remains		
			Demand	Supply	Residual Need	Demand	Supply	Residual Need
LB Croydon	FBB LB Croydon Residents	2009-11	760	460	300	466	160	306
		2012-16	1,182	0	1,182	725	0	725
		2017-21	1,098	0	1,098	673	0	673
		2022-26	1,092	0	1,092	669	0	669
		2027-31	1,111	0	1,111	681	0	681
		<b>Total</b>	<b>5,242</b>	<b>460</b>	<b>4,782</b>	<b>3,213</b>	<b>160</b>	<b>3,053</b>
LB Croydon	FBB LB Croydon Residents including inflow	2009-11	844	460	384	518	160	358
		2012-16	1,313	0	1,313	805	0	805
		2017-21	1,219	0	1,219	748	0	748
		2022-26	1,213	0	1,213	744	0	744
		2027-31	1,234	0	1,234	756	0	756
		<b>Total</b>	<b>5,824</b>	<b>460</b>	<b>5,364</b>	<b>3,571</b>	<b>160</b>	<b>3,411</b>
LB Croydon North	FBB LB Croydon Residents	2009-11	271	115	156	166	40	126
		2012-16	405	0	405	248	0	248
		2017-21	359	0	359	220	0	220
		2022-26	358	0	358	220	0	220
		2027-31	363	0	363	222	0	222
		<b>Total</b>	<b>1,756</b>	<b>115</b>	<b>1,641</b>	<b>1,076</b>	<b>40</b>	<b>1,036</b>
LB Croydon North	FBB LB Croydon Residents including inflow	2009-11	301	115	186	185	40	145
		2012-16	450	0	450	276	0	276
		2017-21	399	0	399	245	0	245
		2022-26	398	0	398	244	0	244
		2027-31	403	0	403	247	0	247
		<b>Total</b>	<b>1,951</b>	<b>115</b>	<b>1,836</b>	<b>1,196</b>	<b>40</b>	<b>1,156</b>
LB Croydon Central	FBB LB Croydon Residents	2009-11	210	115	95	129	40	89
		2012-16	361	0	361	221	0	221
		2017-21	363	0	363	222	0	222
		2022-26	358	0	358	219	0	219
		2027-31	339	0	339	208	0	208
		<b>Total</b>	<b>1,631</b>	<b>115</b>	<b>1,516</b>	<b>1,000</b>	<b>40</b>	<b>960</b>
LB Croydon Central	FBB LB Croydon Residents including inflow	2009-11	233	115	118	143	40	103
		2012-16	401	0	401	246	0	246
		2017-21	403	0	403	247	0	247
		2022-26	398	0	398	244	0	244
		2027-31	377	0	377	231	0	231
		<b>Total</b>	<b>1,812</b>	<b>115</b>	<b>1,697</b>	<b>1,111</b>	<b>40</b>	<b>1,071</b>
LB Croydon East	FBB LB Croydon Residents	2009-11	190	115	95	117	40	77
		2012-16	281	0	281	172	0	172
		2017-21	248	0	248	152	0	152
		2022-26	252	0	252	154	0	154
		2027-31	276	0	276	169	0	169
		<b>Total</b>	<b>1,247</b>	<b>115</b>	<b>1,132</b>	<b>764</b>	<b>40</b>	<b>724</b>
LB Croydon East	FBB LB Croydon Residents including inflow	2009-11	211	115	96	129	40	89
		2012-16	312	0	312	192	0	192
		2017-21	276	0	276	169	0	169
		2022-26	280	0	280	172	0	172
		2027-31	306	0	306	188	0	188
		<b>Total</b>	<b>1,385</b>	<b>115</b>	<b>1,270</b>	<b>849</b>	<b>40</b>	<b>809</b>
LB Croydon South	FBB LB Croydon Residents	2009-11	89	89	0	54	40	14
		2012-16	135	26	109	83	0	83
		2017-21	128	0	128	78	0	78
		2022-26	128	0	128	78	0	78
		2027-31	133	0	133	81	0	81
		<b>Total</b>	<b>612</b>	<b>115</b>	<b>497</b>	<b>375</b>	<b>40</b>	<b>335</b>
LB Croydon South	FBB LB Croydon Residents including inflow	2009-11	98	98	0	60	40	20
		2012-16	150	17	133	92	0	92
		2017-21	142	0	142	87	0	87
		2022-26	142	0	142	87	0	87
		2027-31	148	0	148	91	0	91
		<b>Total</b>	<b>680</b>	<b>115</b>	<b>565</b>	<b>417</b>	<b>40</b>	<b>377</b>

## APPENDIX I

Potential Extension Sites

**MITCHAM ROAD CEMETERY AND CREMATORIUM EXTENSION SITES**



ES1 – Mayfield Road Playing Fields  
ES2 – Gonville Road Allotments  
ES6 – Archbishop Lanfranc School

ES7 – Croydon Athletic Football Club  
ES8 – Gonville Primary School



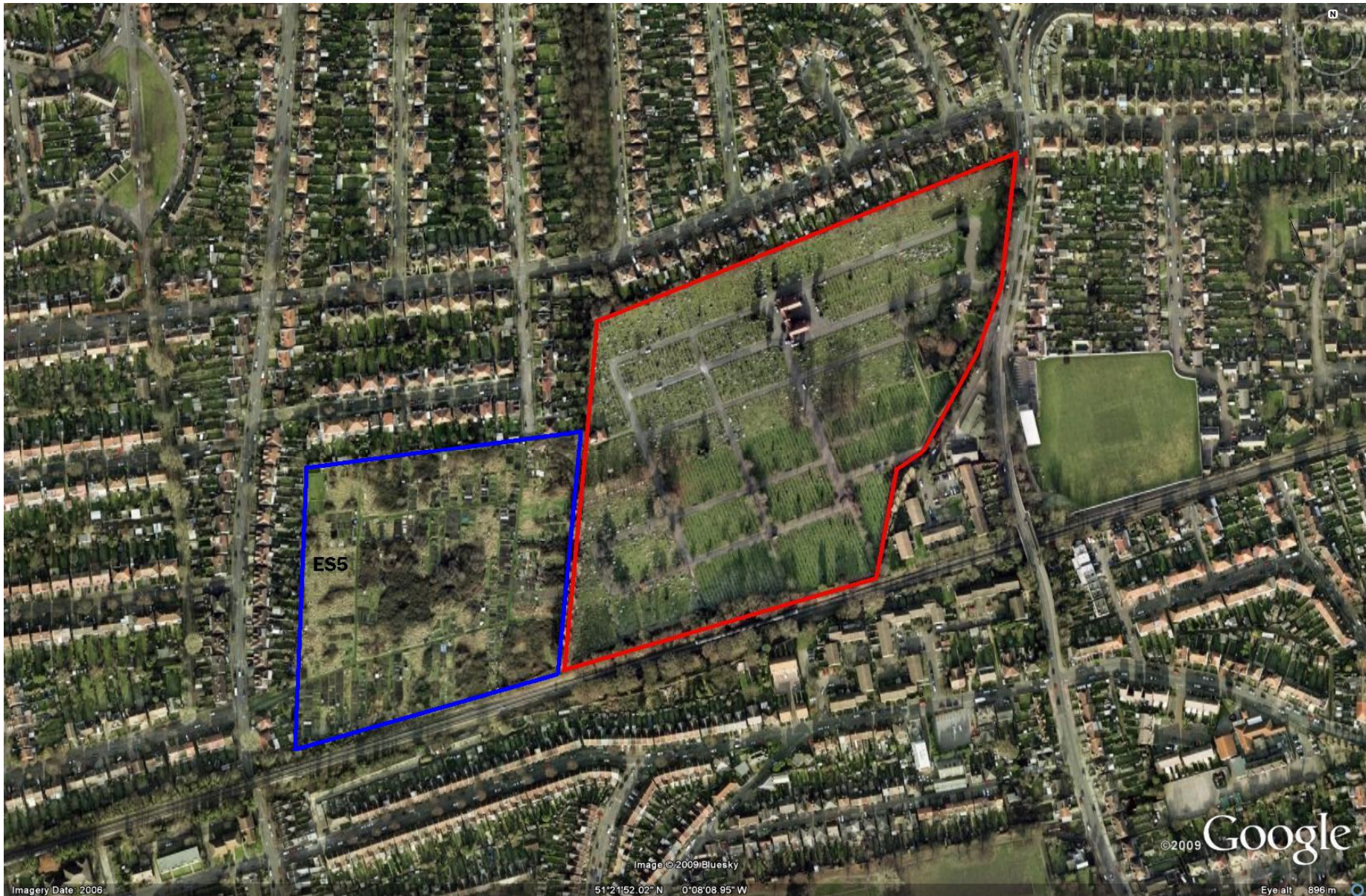
**GREENLAWN MEMORIAL PARK EXTENSION SITES**



ES3 – Land to the east of Greenlawn  
ES4 – Land to the northeast of Greenlawn

ES9 – Land to the south of Greenlawn  
ES10 – Land to the north of Greenlawn

**BANDON HILL CEMETERY EXTENSION SITE**



ES5 – Demesne Road Allotments

## Appendix I - Potential Extension Sites

**Table i: Extension Sites with Filters**

Ref	Site Name	Location	Site Area (ha)	Use	Planning Policy Designations	Comments	Reason for Exclusion from Burial Needs Study
ES1	Mayfield Road Playing Fields	LB Croydon	4.30	Football pitch and playing field	Metropolitan Open Land	Operational use as a football stadium. Located within West Thornton Ward	Open Space Deficiency
ES2	Gonville Road Allotments	LB Croydon	4.20	Allotments	Metropolitan Open Land	Recreation facility within West Thornton Ward	Open Space Deficiency
ES3	Land to the east of Greenlawns	Tandridge District	4.40	Grazing land	Green Belt and Area of Great Landscape Value	Open land located within Tandridge District	Site to be considered in further options assessment
ES4	Land to the northeast of Greenlawns	Tandridge District	4.70	Grazing land	Green Belt and Area of Great Landscape Value	Open land located within Tandridge District adjacent to ES3. No direct access from Greenlawn	Site to be considered in further options assessment
ES5	Demesne Road Allotments	LB Sutton	3.98	Allotments	Metropolitan Green Chain, Green Corridor and Land Safeguarded for Cemetery Extension	Operational allotments located within LB Sutton	Site to be considered in further options assessment
ES6	Archbishop Lanfranc School	LB Croydon	5.40	School	Metropolitan Open Land	Operational school buildings and associated playing fields within West Thornton Ward	Land in Existing Operational Use or Pipeline Development
ES7	Croydon Athletic Football Club	LB Croydon	1.37	Football stadium	Metropolitan Open Land	Operational use as a football stadium. Located within West Thornton Ward	Site is less than 2ha
ES8	Gonville Primary School	LB Croydon	1.39	School	Metropolitan Open Land and Educational Open Space	Operational school buildings and associated playing fields within West Thornton Ward	Site is less than 2ha
ES9	Land to the south of Greenlawn	Tandridge District	0.97	Enclosed fields	Green Belt and Area of Great Landscape Value		Site is less than 2ha
ES10	Land to the north of Greenlawn	Tandridge District	1.55	Recreation ground	Green Belt and Area of Great Landscape Value	Recreation ground	Site is less than 2ha

## APPENDIX J

Site Identification

## Appendix J - Site Identification

**Table i: Site Identification - London Brownfield Site Database Sites**

Site Name	Location Details	Site Area (ha)
Cane Hill Hospital (Hospital Buildings Only)	Portnalls Road, Coulsdon, CR5 3YL	11.95
West Croydon Station and 130-181 London Road	London Road, CR0 2RB	5.98
Former British Gas Site*	Purley Way, CR0 4NR	5.47
Fairfield and Croydon College	College Road and Park Lane, CR9 1DG	4.04
Former Queens Hospital	Queens Road, CR0 2PR	4.00

**Table ii: Site Identification - Greater London Authority Strategic Housing Land Availability Assessment Sites**

Site Name	Location Details	Site Area (ha)
Cane Hill Hospital*	Brighton Road, Coulsdon	80.14
Addington High School and Fairchildes Primary School	Fairchildes Avenue	18.17
Selhurst Depot	Tennison Road	14.03
Woodcote High School	Dunsfold Rise	10.64
Mitcham Road Crematorium and Cemetery*	Thornton Road	9.25
Unist at Redlands Centre	Ullswater Crescent	8.65
Coulsdon High School	Homefield Road	8.62
Upper Norwood Recreation Ground	Eversley Road	7.82
Princes Way	Princes Way	7.38
Telewest Site	Factory Lane#	6.92
Former British Gas Site*	Purley Way, CR0 4NR	5.31
A23 Coulsdon Bypass	Land Adjacent to the A23	5.28
Valley Park Retail Park (B&Q, Units A-G)	Daniell Way	5.27
Norbury Manor High School for Girls	Kensington Avenue	4.70
Selhurst High School and BRIT School	The Crescent	4.69
John Ruskin Sixth Form College	Selsdon Park Road	4.63
Selsdon High School	Farnborough Avenue	4.58
Coulsdon College	Placehouse Lane	4.54
Mayday Hospital	530 London Road	4.38
Land at Stanley Close	Stanley Close/Betjeman Close/Shelley Close/Larkin Close/Rossetti Gardens	4.20
Whitgift Centre	Wellesley Road	4.18
Grange Park Recreation Ground	Coulsdon Road	4.16
Unit at Waddon Marsh Way	Purley Way	4.13
Units at Imperial Way	Imperial Way	4.11
Former Queens Hospital Site	Queens Road	4.00

**Table iii: Site Identification - LB Croydon Strategic Housing Land Availability Assessment Sites**

Site Name	Location Details	Site Area (ha)
Addington Golf Centre*	Featherbed Lane, CR0 9AA	108.08
Cane Hill Hospital*	Brighton Road, Coulsdon	81.87
Land off Kent Gateway (West)	Land off Kent Gateway, New Addington	13.92
Land north of Longwood Road	North of Longwood Road and west of	4.29
Land r/o Kingswood Way	Land r/o 20-30 Kingswood Way, Selsdon	4.09

**Table iv: Site Identification - LB Croydon Employment Land Database Sites**

Site Name	Location Details	Site Area (ha)
Former British Gas site	Jennett Road, CR0 4NR	5.24

**Table v: Site Identification - LB Croydon Land Assets Sites**

Address	Site Area (ha)	Address	Site Area (ha)
Addington Court Golf Club*	106.70	Wandle Park	8.50
Land at Fox Lane/Coulsdon Road	98.40	Caterham Drive/Old Lodge Lane Land	8.20
Selsdon Wood Nature Reserve	89.93	Sanderstead Recreation Ground	7.90
Kings Wood	59.69	Upper Norwood Recreation Ground	7.77
Coulsdon Court Golf Course	59.08	Selsdon High School	7.72
Addington Palace Golf Club	56.65	Ashburton Park	7.50
Warlingham Court Farm	54.00	Heathfield Open Space	7.28
Addington Hills	52.61	Purley Beeches	7.18
South Norwood Country Park	50.58	Milne Park Pavilions	6.88
Lloyd Park	45.27	Purley Way West (Part)	6.83
Heathfield Estate	44.12	Wontford Road/Haydon Avenue Woods	6.75
Shirley Park Golf Club	42.49	Rickman Hill Recreation Ground	6.67
Purley Way Playing Fields	40.06	Beaulieu Heights Park	6.47
Croham Hurst Open Space	34.30	Purley Way West Open Space	6.36
Shirley Heath	27.50	The Lawns Open Space	6.27
Littleheath Woods	25.90	Long Lane Woods	6.07
Mitcham Road Cemetery and Crematorium*	21.35	Park Hill Recreation Ground	6.07
Kent Gateway (East)	20.64	Coombe Wood	5.76
Ashburton Playing Field	20.00	South Norwood Recreation Ground	5.64
Addington Vale	19.42	Biggin Wood	5.46
Featherbed Lane (Hutchinsons Bank)	19.00	Thornton Heath Recreation Ground	5.46
Riddlesdown Extension	15.00	Parkfield Recreation Ground	5.36
Norwood Grove	13.96	Coombe Farm, John Ruskin Playing Field,	5.22
Duppas Hill Recreation Ground	13.76	Higher Drive Recreation Ground	5.05
Rowdown Woods	13.76	Chipstead Valley J. & I. School	4.70
Millstock	13.68	Heavers Farm Allotment	4.45
Addington High School	13.63	Pinewoods	4.45
Shirley Park Estate	13.10	Fairchildes I. & J. School	4.45
Birchwood/Castle Hill Ruffs	13.05	Grange Park, Coulsdon	4.45
Betts Mead Recreation Ground	12.14	Land at Pondfield Road	4.40
Rowdown Fields	11.93	Gonville Road Allotments	4.39
Norbury Park	11.53	Brickfield Meadow	4.37
North Downs Recreation Ground	11.53	Mayfield Road Recreation Ground	4.30
Croydon Sports Arena	11.25	Coombe Lane Central Nursery	4.25
Grangewood Park	11.04	Gilbert Scott J.& I. School and former Redgates	4.23
Coombe Farm Playing Fields	11.00	Bleakfield Shaw, Coulsdon Woods	4.21
Coombe Lodge Playing Fields & Pavilions	10.90	South Croydon Allotments	4.05
Foxley Wood & Sherwood Oaks	10.72	Featherbed Lane (Bears Wood Scout Camp)	4.05
Threehalfpenny Wood, Bridle Way	10.12	Highbury Community and Sports Centre	4.04
Queens Road Cemetery*	9.95	Haling Grove	4.04
Addington Park	9.90	Selsdon Recreation Ground	4.04
Spa Hill Allotments	9.00	Woodcote Grove Road Recreation Ground	4.04
Sanderstead Plantation	8.80	Coulsdon Memorial Ground	4.04
Woodcote High School	8.80	Castle Hill I. & J. School	4.03
Ashburton Community School	8.70	Rowdown J. & I. School	4.01
Auckland Road Playing Fields	8.50		

\*denotes a site duplicated in Tables i-v

## APPENDIX K

### Initial Options Assessment

## Appendix K - Initial Options Assessment

**Table i: Initial Options Assessment - London Brownfield Site Database Sites**

NLP Ref	Site Name	Site Area (ha)	National Land Use Database Type	Proposed Use	Planning Status	Planning Designations	Other Designations/ Comments	Reason for Exclusion from Burial Needs Study
A1	Cane Hill Hospital (Hospital Building Only)	11.95	Derelict land and buildings	Mixed	Allocated	Green Belt	N/A	Planning Policy Designation
A2	West Croydon Station and 130-181 London Road	5.98	land and buildings in use and allocated in Local Plan or with planning permission	Mixed	Allocated	Listed building and Opportunity Area	Potential contamination on part of site	Planning Policy Designation
A3	Former British Gas Site	5.47	Vacant land	Employment	Full Planning Permisson	Strategic Employment Land	Potential flood risk	Planning Policy Designation
A4	Fairfield and Croydon College	4.04	land and buildings in use and allocated in Local Plan or with planning permission	Mixed	Allocated	Opportunity Area	N/A	Planning Policy Designation
A5	Fomer Queens Hospital	4	Vacant buildings	Housing	Outline Planning Permission	Listed building	N/A	Planning Policy Designation



**Table ii: Initial Options Assessment - Greater London Authority Strategic Housing Land Availability Assessment Sites**

NLP Ref	Site Name	Postcode	Site Area (ha)	Exclude Site from SHLAA	Exclude Reason from SHLAA	Exclude Note from SHLAA	Full Planning	Outline Planning	Housing Source	Designated Open Space	Strategic Employment	Reason for Exclusion from Burial Needs Study
B1	Cane Hill Hospital	CR5 3YL	80.14	N			N	N	Allocation (Part)	Y	N	Site to be considered in further options assessment
B2	Addington High School and Fairchildes Primary School	CR0 0AH	18.17	N			N	N	Potential Housing Site	Y	N	Land in Existing Operational Use or Pipeline Development
B3	Selhurst Depot		14.03	Y		The site is the main depot for both Southern and First Capital Connect and we are not aware of any plans for moving it.	N	N	Potential Housing Site	N	N	Land in Existing Operational Use
B4	Woodcote High School	CR5 2ED	10.64	Y	School or Hospital		N	N	Potential Housing Site	N	N	Land in Existing Operational Use or Pipeline Development
B5	Mitcham Road Crematorium and Cemetery		9.25	Y	Other	Existing Cemetery	N	N	Potential Housing Site	N	N	Duplicated (Protected Open Space)
B6	Unist at Redlands Centre	CR5 2HT	8.65	N			N	N	Potential Housing Site	N	Y	Planning Policy Designation
B7	Coulsdon High School	CR5 1ES	8.62	Y	School or Hospital		N	N	Potential Housing Site	N	N	Land in Existing Operational Use or Pipeline Development
B8	Upper Norwood Recreation Ground	SE19 3QS	7.82	N			N	N	Potential Housing Site	Y	N	Open Space Deficiency
B9	Princes Way	CR0 4RD	7.38	N			N	N	Potential Housing Site	N	Y	Planning Policy Designation
B10	Telewest Site	CR9 3RA	6.92	N			N	N	Potential Housing Site	N	Y	Planning Policy Designation
B11	Former British Gas Site	CR0 4NR	5.31	N			Y	N	Approval	N	Y	Planning Policy Designation
B12	A23 Coulsdon Bypass	CR5 2AR	5.28	Y	Other	Site is the A23 Coulsdon Bypass	N	N	Potential Housing Site	N	N	Land in Existing Operational Use or Pipeline Development
B13	Valley Park Retail Park (B&Q, Units A-G)	CR0 4YJ	5.27	N			N	N	Potential Housing Site	N	N	Land in Existing Operational Use or Pipeline Development
B14	Norbury Manor High School for Girls	CR7 8BT	4.70	Y	School or Hospital		N	N	Potential Housing Site	N	N	Land in Existing Operational Use or Pipeline Development
B15	Selhurst High School and BRIT School	CR0 2HN	4.69	Y	School or Hospital		N	N	Potential Housing Site	N	N	Land in Existing Operational Use or Pipeline Development
B16	John Ruskin Sixth Form College	CR2 8JJ	4.63	Y	School or Hospital		N	N	Potential Housing Site	N	N	Land in Existing Operational Use or Pipeline Development
B17	Selsdon High School	CR2 8HD	4.58	Y	School or Hospital		N	N	Potential Housing Site	N	N	Land in Existing Operational Use or Pipeline Development
B18	Coulsdon College	CR5 1LA	4.54	Y	School or Hospital		N	N	Potential Housing Site	N	N	Land in Existing Operational Use or Pipeline Development
B19	Mayday Hospital	CR7 7YE	4.38	Y	School or Hospital		N	N	Potential Housing Site	N	N	Land in Existing Operational Use or Pipeline Development
B20	Land at Stanley Close	CR5 2LU	4.20	Y	Private Housing in Multiple Ownership		N	N	Potential Housing Site	N	N	Land in Existing Operational Use or Pipeline Development
B21	Whitgift Centre	CR0 1LP	4.18	N			N	N	Potential Housing Site	N	N	Land in Existing Operational Use or Pipeline Development
B22	Grange Park Recreation Ground		4.16	N			N	N	Potential Housing Site	Y	N	Open Space Deficiency
B23	Unit at Waddon Marsh Way	CR9 4HS	4.13	N			N	N	Potential Housing Site	N	Y	Planning Policy Designation
B24	Units at Imperial Way	CR0 4RR	4.11	N			N	N	Potential Housing Site	N	Y	Planning Policy Designation
B25	Former Queens Hospital Site	CR0 2QE	4.00	Y	Existing High Density Housing		N	N	Potential Housing Site	N	N	Land in Existing Operational Use or Pipeline Development

**Table iii: Initial Options Assessment - LB Croydon Strategic Housing Land Availability Assessment Sites**

NLP Ref	Site Name	Site Area (Ha)	Environmental Constraints	Other Designations	Physical Constraints	Land currently designated for other use to what is proposed	Details of Highways Access	Adjacent land uses	Reason for Exclusion from Burial Needs Study
C1	Addington Golf Centre	108.08	Green Belt and part designated as a Site of Nature Conservation Importance	Archaeological Priority Zone to the south west of the site and Local View over part of site	None	Green Belt	Can be accessed from Featherbed Lane and also Lodge Lane	Green Belt	Land in Existing Operational Use or Pipeline Development
C2	Cane Hill Hospital	81.87	Part Site of Nature Conservation Importance	Green Belt and Locally Listed Building (Cane Hill itself)		Major Developed Site in Green Belt	Accessed from numerous points around the perimeter	Residential, A23, Coulsdon Town Centre and school	Duplicated Site (Planning Policy Designation)
C3	Land off Kent Gateway (West)	13.92	Green Belt and Site of Nature Conservation Importance	Local View (New Addington to Addington Palace)		Green Belt	Off Kent Gateway	Residential, Parkland and golf course and transport interchange	Planning Policy Designation
C4	Land north of Longwood Road	4.29	Green Belt, Site of Nature Conservation Importance and blanket TPO across site		Land graded between 1/3 and 1/ 5	Green Belt	Off Hawkhurst Road (not adopted) which leads on to Kenley Lane	Fields, trees and residential	Planning Policy Designation
C5	Land r/o Kingswood Way	4.09	Green Belt			Green Belt	Requires demolition of property	Residential and field	Site to be considered in further options assessment

**Table iv: Initial Options Assessment - LB Croydon Employment Land Database Sites**

NLP Ref	Site Name	Site Area (ha)	Reason for Exclusion from Burial Needs Study
D1	Former British Gas site	5.24	Duplicated Site (Planning Policy Designation)

**Table v: Initial Options Assessment - LB Croydon Land Asset Sites**

NLP Ref	Site Name	Ward	Site Area (Ha)	Type (as defined by LB Croydon)	Type (as defined in OSS)*	Additional Comments	Usage	Reason for Exclusion from Burial Needs Study
E1	Addington Court Golf Club	Heathfield	106.70	Golf Course				Land in Existing Operational Use or Pipeline Development
E2	Land at Fox Lane/Coulsdon Road	Coulsdon East	98.40	Park Land	Parks and Gardens	Large area of public open space laid out as an informal recreation area with some sporting use. Whilst a very large park this site is more akin to "Accessible Countryside/Urban Fringe"	M	Site to be considered in further options assessment
E3	Selsdon Wood	Selsdon & Ballards (formerly Selsdon)	89.93	Park Land	Accessible Countryside/Urban fringe	Large public open space mainly wooded. Primary use is as a nature reserve. Council only has a long lease from The National Trust		Site to be considered in further options assessment
E4	Kings Wood	Sanderstead	59.69	Park Land	Natural/semi natural urban green space	Mostly wooded with limited access		Site to be considered in further options assessment
E5	Coulsdon Court Golf Course	Coulsdon East	59.08	Golf Course				Land in Existing Operational Use or Pipeline Development
E6	Addington Palace Golf Club	Heathfield	56.65	Golf Course				Land in Existing Operational Use or Pipeline Development
E7	Warlingham Court Farm	Sanderstead	54.00	Agriculture				Site to be considered in further options assessment
E8	Addington Hills	Heathfield	52.61	Park Land	Natural/semi Natural Urban Green Space	Public Open Space. Mostly wooded	M	Site to be considered in further options assessment
E9	South Norwood Country Park	Woodside	50.58	Park Land	Parks and Gardens	Public Open Space, more akin to "Natural/Semi Natural Urban Green Space". A Nature Conservation Area with some sport and recreational facilities. Site bisected by tramlink	H	Planning Policy Designation
E10	Lloyd Park	Fairfield	45.27	Park Land	Parks and Gardens	Major park, recreational and sporting facilities on part of site. Site subject to numerous restrictive covenants	H	Site to be considered in further options assessment
E11	Heathfield Estate	Heathfield	44.12	Other	Parks and Gardens	Mostly laid out as park and garden. There is an adjoining Nature Conservation Area and also a large leased farm. In addition there are various covenants that affect this site	M	Planning Policy Designation
E12	Shirley Park Golf Club	Heathfield	42.49	Golf Course				Land in Existing Operational Use or Pipeline Development
E13	Purley Way Playing Fields	Waddon	40.06	Park Land	Outdoor sports facilities	LB Croydon's main non education playing fields. Site subject to numerous restrictive covenants to maintain as open space, legal advice required to assess whether cemetery use would contravene this.	H	Protected Recreation or Sports Facility
E14	Croham Hurst Open Space	Croham	34.30	Park Land	Natural/semi Natural Urban Green Space	Designated SSSI		Planning Policy Designation
E15	Shirley Heath	Heathfield	27.50	Park Land	Natural/semi Natural Urban Green Space	Largely wooded but with playing fields and childrens playground		Open Space Deficiency
E16	Littleheath Woods	Selsdon & Ballards (formerly Selsdon)	25.90	Park Land	Natural/semi Natural Urban Green Space			Site to be considered in further options assessment
E17	Mitcham Road Cemetery	West Thornton	21.35	Cemetery				Open Space Deficiency
E18	Land off Kent Gateway (East)	Heathfield	20.64	Agriculture				Site to be considered in further options assessment
E19	Ashburton Playing Field	Ashburton	20.00	Park Land	Outdoor Sports Facilities	Primarily playing fields but some general recreation areas	H	Protected Recreation or Sports Facility
E20	Addington Vale	New Addington	19.42	Park Land	Parks and Gardens	Mostly grassed recreation area. Pitch and Putt area to be let to a golf academy and another part adjoining Mickleham Way. Allotments to be let as a community garden		Site to be considered in further options assessment
E21	Featherbed Lane (Hutchinsons Bank)	Heathfield	19.00	Nature Reserve				Planning Policy Designation
E22	Riddlesdown Extension	Sanderstead	15.00	Park Land	Accessible Countryside/Urban fringe	Mixed heath and downland. Adjoins City of London Corps Riddlesdown Common		Site to be considered in further options assessment

NLP Ref	Site Name	Ward	Site Area (Ha)	Type (as defined by LB Croydon)	Type (as defined in OSS)*	Additional Comments	Usage	Reason for Exclusion from Burial Needs Study
E23	Norwood Grove	Norbury	13.96	Park Land	Parks and Gardens	Formally laid out park forming grounds of historic mansion (also Council owned)	H	Planning Policy Designation
E25	Duppas Hill Recreation Ground	Waddon	13.76	Park Land	Parks and Gardens	Part laid out as playing fields	L	Protected Recreation or Sports Facility
E24	Rowdown Woods	New Addington	13.76	Park Land	Natural/semi Natural Urban Green Space	Woodland forming fringe of New Addington estate		Site to be considered in further options assessment
E26	Millstock	Coulsdon West	13.68	Grazing	Accessible Countryside/ Park and Garden	This land requires minimal maintenance. Public open space. The site fronts the main Brighton Road, would be an issue over creating a fresh access onto the road (there is none at present). Also subject to a grazing licence. Further issue is that a small strip in the centre of the site is owned by Reigate and Banstead Council	L/M	Open Space Deficiency
E27	Addington High School	New Addington	13.63	Sch Second				Land in Existing Operational Use or Pipeline Development
E28	Shirley Park Estate	Fairfield	13.10	Park Land	Natural/semi Natural Urban Green Space	Minimal maintenance parkland adjacent Shirley Park Golf Club	L	Site to be considered in further options assessment
E29	Birchwood/Castle Hill Ruffs	Fieldway	13.05	Park Land	Natural/semi Natural Urban Green Space	Woodland forming fringe of New Addington estate	L	Site to be considered in further options assessment
E30	Betts Mead Recreation Ground	Kenley	12.14	Park Land	Parks and Gardens	Terraced fields		Protected Recreation or Sports Facility
E31	Rowdown Fields	Fieldway	11.93	Park Land	Outdoor Sports facilities		M	Protected Recreation or Sports Facility
E33	Norbury Park	Norbury	11.53	Park Land	Parks and Gardens	General recreation park plus playing fields	H	Open Space Deficiency
E32	North Downs Recreation Ground	New Addington	11.53	Park Land	Parks and Gardens	Mixed general recreation and playing fields		Protected Recreation or Sports Facility
E34	Croydon Sports Arena	Woodside	11.25	Sports Grnd	Outdoor sports facilities	Sports arena. Adjacent Rylands Fields are part of South Norwood Country Park	H	Protected Recreation or Sports Facility
E35	Grangewood Park	Thornton Heath	11.04	Park Land	Parks and Gardens	Mostly a formal park, partly wooded		Open Space Deficiency
E36	Coombe Farm Playing Fields	Fairfield	11.00	Play Field	provision for children and young persons	Education Playing Fields. Poor access, all laid out as playing fields. Restrictive covenant for Educational use		Protected Recreation or Sports Facility
E37	Coombe Lodge Playing Fields & Pavilions	Croham	10.90	Play Field				Protected Recreation or Sports Facility
E38	Foxley Wood & Sherwood Oaks	Kenley	10.72	Park Land	Natural/semi Natural Urban Green Space			Site to be considered in further options assessment
E39	Threepenny Wood	Heathfield	10.12	Park Land	Natural/semi Natural Urban Green Space			Site to be considered in further options assessment
E40	Queens Road Cemetery	Selhurst	9.95	Cemetery				Open Space Deficiency
E41	Addington Park	Heathfield	9.90	Park Land	Parks and Gardens	Open space used for recreation plus playing fields	H	Protected Recreation or Sports Facility
E42	Spa Hill Allotments	Upper Norwood	9.00	Allotments	Allotments	Urban location. Leased to Allotment Society	H	Open Space Deficiency
E44	Woodcote High School	Coulsdon West	8.80	Sch Second				Open Space Deficiency
E43	Sanderstead Plantation	Sanderstead	8.80	Park Land	Natural/semi Natural Urban Green Space	Entirely wooded		Site to be considered in further options assessment
E45	Ashburton Community School	Ashburton	8.70	Sch Second				Land in Existing Operational Use or Pipeline Development
E47	Auckland Road Playing Fields	South Norwood	8.50	Play Field				Open Space Deficiency
E46	Wandle Park	Broad Green	8.50	Park Land	Parks and Gardens	Formal park. Proposals to deculvert the river Wandle which runs through park. Water table issues	M	Open Space Deficiency
E48	Caterham Drive/Old Lodge Lane Land	Coulsdon East	8.20	Nat Reserve				Planning Policy Designation
E49	Sanderstead Recreation Ground	Sanderstead	7.90	Park Land	Parks and Gardens	Formal park	H	Protected Recreation or Sports Facility
E50	Upper Norwood Recreation Ground	Upper Norwood	7.77	Park Land	Parks and Gardens	General recreation park plus playing fields		Open Space Deficiency
E51	Selsdon High School	Heathfield	7.72	Sch Second				Land in Existing Operational Use or Pipeline Development

NLP Ref	Site Name	Ward	Site Area (Ha)	Type (as defined by LB Croydon)	Type (as defined in OSS)*	Additional Comments	Usage	Reason for Exclusion from Burial Needs Study
E52	Ashburton Park	Ashburton	7.50	Park Land	Parks and Gardens	Formal park	H	Site to be considered in further options assessment
E53	Heathfield Open Space	*Heathfield	7.28	Park Land	Parks and Gardens	Part of Heathfield estate (see D11)	M	Planning Policy Designation
E54	Purley Beeches	Sanderstead	7.18	Park Land	Natural/semi Natural Urban Green Space	Tennis courts in addition to mature woodland		Site to be considered in further options assessment
E55	Milne Park Pavilions	New Addington	6.88	Park Land	Parks and Gardens	General recreation park plus playing fields		Protected Recreation or Sports Facility
E56	Purley Way West (Part)	Waddon	6.83	Park Land	Natural/semi Natural Urban Green Space	Former Croydon Airport, remaining part of runway listed	L	Planning Policy Designation
E57	Wontford Road/Haydon Avenue Woods	Kenley	6.75	Park Land	Natural/semi Natural Urban Green Space	Heavily wooded		Site to be considered in further options assessment
E58	Rickman Hill Recreation Ground	Coulsdon West	6.67	Park Land	Parks and Gardens	General recreation park plus playing fields		Open Space Deficiency
E59	Beaulieu Heights Park	South Norwood	6.47	Park Land	Parks and Gardens	A large part is heavily wooded	H	Deliverability Constraint
E60	Purley Way West Open Space	Waddon	6.36	Park Land	Outdoor sports facilities	Currently vacant sports ground. Otherwise a repeat of Purley Way West asset referred to above (see D56)	H	Site to be considered in further options assessment
E61	The Lawns Open Space	Upper Norwood	6.27	Park Land	Parks and Gardens	Part open recreation area ,part wooded		Open Space Deficiency
E63	Park Hill Recreation Ground	Fairfield	6.07	Park Land	Parks and Gardens	Mostly formal park. Plus tennis courts	H	Protected Recreation or Sports Facility
E62	Long Lane Woods	Ashburton	6.07	Park Land	Natural/semi Natural Urban Green Space	Entirely wooded. Part with nom public access set aside as a bird sanctuary		Site to be considered in further options assessment
E64	Coombe Wood	Selsdon & Ballards (formerly *Selsdon)	5.76	Park Land	Parks and Gardens	Very important formal park	H	Site to be considered in further options assessment
E65	South Norwood Recreation Ground	South Norwood	5.64	Park Land	Parks and Gardens	General recreation park plus playing fields	H	Open Space Deficiency
E67	Thornton Heath Recreation Ground	Bensham Manor	5.46	Park Land	Parks and Gardens	Formal park		Open Space Deficiency
E66	Biggin Wood	Upper Norwood	5.46	Park Land	Parks and Gardens	Part open recreation area ,part wooded		Open Space Deficiency
E68	Parkfield Recreation Ground	Shirley	5.36	Park Land	Parks and Gardens	General recreation park plus playing fields	M	Open Space Deficiency
E69	Coombe Farm, John Ruskin Playing Field	Heathfield	5.22	Play Field				Protected Recreation or Sports Facility
E70	Higher Drive Recreation Ground	Kenley	5.05	Park Land	Parks and Gardens	Mixed formal park, woods and playing field		Protected Recreation or Sports Facility
E71	Chipstead Valley J. & I. School	Coulsdon West	4.70	Sch Primary				Land in Existing Operational Use or Pipeline Development
E75	Fairchildes I. & J. School	New Addington	4.45	Sch Primary				Land in Existing Operational Use or Pipeline Development
E74	Grange Park, Coulsdon	Coulsdon East	4.45	Park Land	Parks and Gardens	Mixed formal park and playing field	L	Site to be considered in further options assessment
E73	Pinewoods	Heathfield	4.45	Park Land	Natural/semi Natural Urban Green Space	Entirely wooded		Site to be considered in further options assessment
E72	Heavers Farm Allotment	Selhurst	4.45	Allotments	Allotments	Urban location. Leased to Allotment Society	H	Open Space Deficiency
E76	Land at Pondfield Road	Kenley	4.40	Park Land	Amenity Green Space	Mixed scrub and woodland		Deliverability Constraint
E77	Gonville Road Allotments	West Thornton	4.39	Allotments	Allotments	Urban location. Leased to allotment society	H	Open Space Deficiency
E78	Brickfield Meadow	Woodside	4.37	Park Land	Parks and Gardens			Site to be considered in further options assessment
E79	Mayfield Road Recreation Ground /Sports Club	West Thornton	4.30	Park Land	Parks and Gardens	Small formal park/playground	M	Open Space Deficiency
E80	Coombe Lane Central Nursery	Croham	4.25	Depot	Not within any of the categories	The site is the main Council parks plant nursery with no public access. Future requirement of site for Provision for Children and young persons under Building Schools for the Future	M	Land in Existing Operational Use or Pipeline Development
E81	Gilbert Scott J.& I. School and former Redgates	Heathfield	4.23	Sch Primary				Land in Existing Operational Use or Pipeline Development
E82	Bleakfield Shaw, Coulsdon Woods	Coulsdon East	4.21	Nat Reserve				Planning Policy Designation
E84	South Croydon Allotments	Croham	4.05	Allotments	Allotments	Urban location. Leased to allotment society	H	Protected Recreation or Sports Facility

NLP Ref	Site Name	Ward	Site Area (Ha)	Type (as defined by LB Croydon)	Type (as defined in OSS)*	Additional Comments	Usage	Reason for Exclusion from Burial Needs Study
E83	Featherbed Lane (Bears Wood Scout Camp)	Heathfield	4.05	Recreation	Provision for Children and Young Persons	Mostly wooded. Leased to Scout Association	H	Site to be considered in further options assessment
E89	Highbury Community and Sports Centre	Upper Norwood	4.04	Park Land	provision for children and young persons	Primarily education playing fields. Pavilion leased to Nursery		Open Space Deficiency
E88	Selsdon Recreation Ground	Selsdon & Ballards (formerly *Selsdon)	4.04	Park Land	Parks and Gardens	General recreation plus playing field		Protected Recreation or Sports Facility
E87	Coulsdon Memorial Ground	Coulsdon East	4.04	Park Land	Parks and Gardens	General recreation plus playing field	H	Protected Recreation or Sports Facility
E86	Haling Grove	Croham	4.04	Park Land	Outdoor sports facilities	Also a general recreation area. Site leased from National Playing Fields Association		Protected Recreation or Sports Facility
E85	Woodcote Grove Road Recreation Ground	Coulsdon West	4.04	Park Land	Parks and Gardens			Open Space Deficiency
E90	Castle Hill I. & J. School	Fieldway	4.03	Sch Primary				Land in Existing Operational Use or Pipeline Development

**Table vi: Initial Options Assessment - Results of First Sieve**

NLP Ref	Site Name	Site Area (ha)	Ward	Source
B1/C2	Cane Hill Hospital	81.87	Coulsdon West	GLA SHLAA/LB Croydon SHLAA
C5	Land r/o Kingswood Way	4.09	Sanderstead	LB Croydon SHLAA
E2	Land at Fox Lane/Coulsdon Road	98.40	Coulsdon East	LB Croydon Land Assets
E3	Selsdon Wood	89.93	Selsdon & Ballards	LB Croydon Land Assets
E4	Kings Wood	59.69	Sanderstead	LB Croydon Land Assets
E7	Warlingham Court Farm	54.00	Sanderstead	LB Croydon Land Assets
E8	Addington Hills	52.61	Heathfield	LB Croydon Land Assets
E10	Lloyd Park	45.27	Fairfield	LB Croydon Land Assets
E11	Heathfield Estate	44.12	Heathfield	LB Croydon Land Assets
E16	Littleheath Woods	25.90	Selsdon & Ballards	LB Croydon Land Assets
E18	Land off Kent Gateway	13.92	Heathfield/Fieldway	LB Croydon Land Assets
E20	Addington Vale	19.42	New Addington	LB Croydon Land Assets
E22	Riddlesdown Extension	15.00	Sanderstead	LB Croydon Land Assets
E24	Rowdown Woods	13.76	New Addington	LB Croydon Land Assets
E28	Shirley Park Estate	13.10	Fairfield	LB Croydon Land Assets
E29	Birchwood/Castle Hill Ruffs	13.05	Fieldway	LB Croydon Land Assets
E38	Foxley Wood & Sherwood Oaks	10.72	Kenley	LB Croydon Land Assets
E39	Threehalfpenny Wood	10.12	Heathfield	LB Croydon Land Assets
E43	Sanderstead Plantation	8.80	Sanderstead	LB Croydon Land Assets
E52	Ashburton Park	7.50	Ashburton	LB Croydon Land Assets
E53	Heathfield Open Space	7.28	Heathfield	LB Croydon Land Assets
E54	Purley Beeches	7.18	Sanderstead	LB Croydon Land Assets
E56	Purley Way West (part)	6.83	Waddon	LB Croydon Land Assets
E57	Wontford Road /Haydon Avenue Woods	6.75	Kenley	LB Croydon Land Assets
E60	Purley Way West Open Space	6.36	Waddon	LB Croydon Land Assets
E62	Long Lane Woods	6.07	Ashburton	LB Croydon Land Assets
E64	Coombe Wood	5.76	Selsdon & Ballards	LB Croydon Land Assets
E74	Grange Park, Coulsdon	4.45	Coulsdon East	LB Croydon Land Assets
E73	Pinewoods	4.45	Heathfield	LB Croydon Land Assets
E78	Brickfield Meadow	4.37	Woodside	LB Croydon Land Assets
E83	Featherbed Lane (Bears Wood Scout Camp)	4.05	Heathfield	LB Croydon Land Assets



**Table vii: Initial Options Assessment - Results of Second Sieve**

NLP Ref	Site Name	Area	Physical Constraints	Use Restrictions	Ownership	Other Covenants	CUDP Nature Designations	Reason for Exclusion from Burial Needs Study
B1/C2	Cane Hill Hospital	81.87	TPO:25, 1993				Part Site of Nature Conservation Importance	Site to be Considered in Detailed Options Assessment
C5	Land r/o Kingswood Way	4.09	No obvious vehicular access. A number of TPOs in the immediate area.					Site to be Considered in Detailed Options Assessment
E2	Land at Fox Lane/Coulsdon Road	98.40	Part wooded and Ancient Woodland. A number of TPOs in immediate area.	The land was acquired for open space and green belt protection purposes.		There are multiple conveyances for this land.	Part Site of Nature Conservation Importance but remaining area over 4ha	Site to be Considered in Detailed Options Assessment
E3	Selsdon Wood	89.93	Much of it is heavily wooded and Ancient Woodland.	LB Croydon hold a lease of this site from the National Trust, the Trust's consent would be required for any change of use from its current use as a public open space and nature reserve.			Site of Nature Conservation Importance and Local Nature Reserve	Planning Policy Designation/ Deliverability Constraints
E4	Kings Wood	59.69	Entirely wooded of which part is Ancient Woodland. TPOs on land directly neighbouring site.				Site of Nature Conservation Importance	Planning Policy Designation/ Deliverability Constraints
E7	Warlington Court Farm	54.00	No obvious vehicular access. Part Ancient Woodland and TPOs: 4, 46 and 47.	The conveyance does not restrict use but there are "overage" provisions which will need further investigation.		Various grant covenants when the Council developed the land as a nature conservation area.	Part Site of Nature Conservation Importance but remaining area over 4ha	Site to be Considered in Detailed Options Assessment
E8	Addington Hills	52.61	Heavily wooded. Possible water table issues as Chaffinch Brook runs through scouts area. TPOs on land directly neighbouring site			Most of the conveyances are 19th Century hand written conveyances which are difficult to read. Those identified appear free of covenants.	Site of Nature Conservation Importance but remaining area over 4ha	Planning Policy Designation/ Deliverability Constraints
E10	Lloyd Park	45.27	Part of the site in active use as football pitches.	One of Croydon's premier parks.		Heavily covenanted and the beneficiaries have adjoining property and are therefore enforceable.	Part Site of Nature Conservation Importance but remaining area over 4ha	Planning Policy Designation/ Deliverability Constraints
E11	Heathfield Estate	44.12	Part wooded and open space is on a steep hill.	Part let on Agricultural Holdings Act tenancy.		Covenanted and beneficiaries.	Part Site of Nature Conservation Importance but remaining area over 4ha, Part Local Nature Reserve	Planning Policy Designation/ Deliverability Constraints
E16	Littleheath Woods	25.90	Mainly wooded and Ancient Woodland.				Site of Nature Conservation Importance	Planning Policy Designation/ Deliverability Constraints
E18	Land off Kent Gate Way	20.64	May be water table issues as the land adjoins a Thames Water pumping station.		The land forms part of a much larger conveyance and a full report on title should be commissioned. A review of the Land Certificate does not reveal any insurmountable legal issues.		Part Site of Nature Conservation Importance	Site to be Considered in Detailed Options Assessment
E20	Addington Vale	19.42	The site is in active use for recreation.					Protected Recreation or Sports Facility
E22	Riddlesdown Extension	15.00	No obvious vehicular access. A number of TPOs in the immediate area.				Site of Nature Conservation Importance	Planning Policy Designation

NLP Ref	Site Name	Area	Physical Constraints	Use Restrictions	Ownership	Other Covenants	CUDP Nature Designations	Reason for Exclusion from Burial Needs Study
E24	Rowdown Woods	13.76	Entirely Wooded and Ancient Woodland.		Heavily wooded and access issues adjoins Kent Gate Way site and same title issues.		Site of Nature Conservation Importance	Planning Policy Designation/ Deliverability Constraints
E28	Shirley Park Estate	13.10	Part wooded and the remainder of the site in active use as football/cricket pitches.					Planning Policy Designation/ Protected Recreation or Sports Facility
E29	Birchwood/Castle Hill Ruffs	13.05	Heavily wooded and Ancient Woodland.		Access issues adjoins Kent Gate WJay site and same title issues.		Site of Nature Conservation Importance	Planning Policy Designation/ Deliverability Constraints
E38	Foxley Wood and Sherwood Oaks	10.72	Heavily wooded and Ancient Woodland.				Part Site of Nature Conservation Importance	Planning Policy Designation/ Deliverability Constraints
E39	Threehalfpenny Woods	10.12	Access issues. Heavily wooded and Ancient Woodland. TPO and conservation area restrictions on land directly neighbouring site.				Mostly Site of Nature Conservation Importance	Planning Policy Designation/ Deliverability Constraints
E43	Sanderstead Plantation	8.80	Heavily wooded.				Site of Nature Conservation Importance	Planning Policy Designation/ Deliverability Constraints
E52	Ashburton Park	7.50						Site to be Considered in Detailed Options Assessment
E53	Heathfield Open Space	7.28	Part wooded and the remainder of the site in active use.			Covenanted and beneficiaries.		Planning Policy Designation/Land in Existing Operational Use
E54	Purley Beeches	7.18	No obvious vehicular access. Heavily wooded.				Site of Nature Conservation Importance	Planning Policy Designation/ Deliverability Constraints
E56	Purley Way West	6.83					Site of Nature Conservation Importance	Planning Policy Designation
E57	Wontford Road/Haydon Avenue Woods	6.75	Heavily wooded. TPO on land directly neighbouring site.				Site of Nature Conservation Importance	Planning Policy Designation/ Deliverability Constraints
E60	Purley Way West Open Space	6.36					Site of Nature Conservation Importance	Planning Policy Designation
E62	Long Lane Woods	6.07	Heavily wooded and Ancient Woodland.				Site of Nature Conservation Importance	Planning Policy Designation/ Deliverability Constraints
E64	Coombe Wood	5.76	Entirely wooded and includes TPO: 46	Part of Croydon's absolutely premier public open space.			Site of Nature Conservation Importance	Planning Policy Designation/ Deliverability Constraints
E73	Pinewoods	4.45	Possible water table issues as Chaffinch Brook runs through scouts area. Heavily wooded with TPOs on land directly neighbouring site.				Site of Nature Conservation Importance	Planning Policy Designation/ Deliverability Constraints
E74	Grange Park	4.45	In active use as football pitches. Bradmore Green Conservation Area.					Protected Recreation or Sports Facility
E78	Brickfield Meadow	4.37	Part wooded, remaining areas include a lake and open space below 2ha in area.				Site of Nature Conservation Importance	Planning Policy Designation/ Deliverability Constraints
E83	Featherbed Lane (Bears Wood Scout Camp)	4.05	Physically isolated with limited access. Ancient Woodland.				Site of Nature Conservation Importance	Planning Policy Designation/ Deliverability Constraints